

XSERIES RV

XSURGE

NEW X-SERIES HAS ARRIVED

FAMILY POD CAMPER TRAILER

**FAMILY FUN IN THE CONVENIENT SIZE OF A POD,
LOADED WITH LUXURY & STYLE.**

Take your family anywhere you desire with style & ease thanks to this spacious & innovative unit.

With the all new REDARC power management system to control the Lithium housed battery, you can make the most of your on board power supply for optimal off-grid performance.

To keep the good times rolling, this unit comes with the usual upgrades all included as standards at no additional cost, such as the Lithium Battery, Gas & 240v Connections, DO35 hitch, Diesel Heater & Batwing awning.

If you need even more space, the Surge is rooftop tent compatible, meaning even more can join in the family adventures.



XSERIESRV.COM.AU

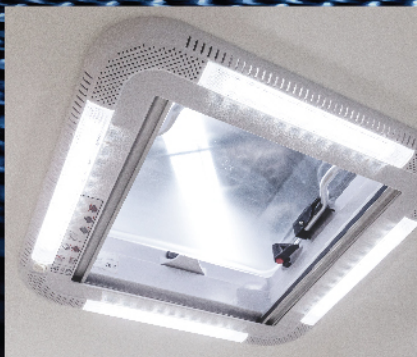
FOLLOW US



X-SERIES RV AUSTRALIA



CAPACITY:
UP TO 6 ADULTS*



CHASSIS

ATM 2250kg*	●
Drawbar Tube Size 100mm x 50mm x 4mm Hot Dip Galvanised	●
16" Mud Terrain Tyres with 1 Spare Included	●
Alloy Rims	●
Heavy Duty Jockey Wheel	●
Do35 Hitch with Receiver Coupling	●
Electric Brakes & Manual Handbrake	●

SUSPENSION

Off Road Independent Suspension System	●
Heavy Duty Coil Springs & Shock Absorbers	●

STORAGE

1 x Large Front Toolbox	●
Dedicated Fridge Slide with Power Supply	●
Interior Storage Cupboards & Drawers	●
Dedicated Kitchen Storage Under Rear Lid	●
Additional Under Bed Storage Space	●
2 x 9kg Gas Bottle Holders	●
2 x 20L Jerry Can Holders	●

KITCHEN

2 Burner Cooktop with Gas Plumbing Connection.	●
2 x 65L Fresh Water Tanks	●
Stainless Steel Slide Out Kitchen	●
Stainless Steel Sink & Tap	●
Hot & Cold Tap Function (External HWU Required)	●
Portable Hot Water Unit (HWU)	●
Wood Grain Look Cabinetry	●

SAFETY

Fire Extinguisher Included	●
ADR Approved Safety Chains & Coupling	●

EXTERIOR GENERAL

Fibreglass Body	●
Black Heavy Duty Lower Body Coating	●
Dual locking Entry Door	●
Batwing Wrap Around Side Awning Included	●
Fold Down Serving/ Picnic Bench with Lighting	●
Built in Roof Cargo Rails	●
Roof Mounted Aerial For Stereo & TV	●
Heavy Duty Mesh Stoneguard	●

INTERIOR GENERAL

Multimedia Stereo System & Smart TV	●
Dual Interior Speakers for Stereo	●
Internal & External LED Lighting Throughout	●
Double Size Main Bed	●
Twin Single Bunk Beds	●
Convertible Bunks to Sofa Bench Space	●
Built in Diesel Heater with Remote Control	●
Wall Mounter Storage Pouches	●
Window with Black Out & Fly Screen Panels	●
Built in Ventilation Fan	●

POWER

REDARC Battery Management System with Solar Reg, Charging, & Bluetooth Controls	●
Anderson Plug Car Connections	●
1 x 150ah Lithium Battery	●
240V Connection with Multiple GPO Points	●
Multiple 12V Sockets with Dedicated Fridge Sockets	●
Internal Main Control Panel	●

CAMPING ACCESSORIES

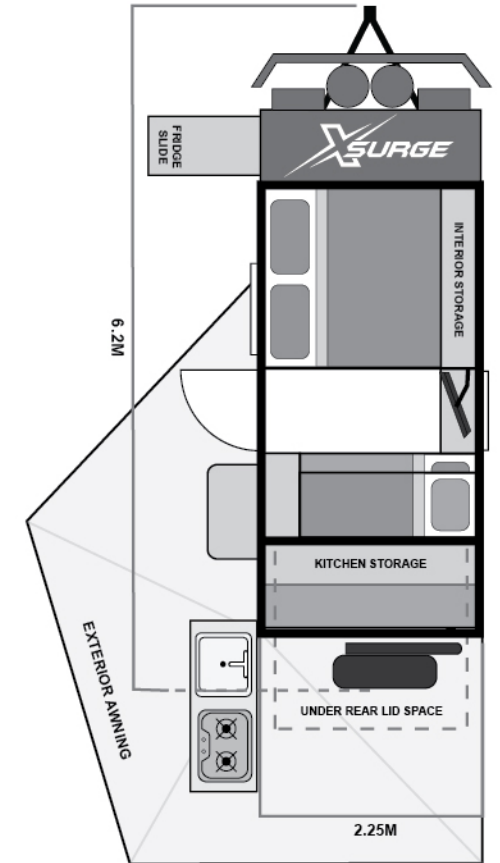
95L Dual Zone Fridge Freezer	○
2KVA Generator	○

● Standard ○ Optional Upgrades

*Sleeps up to 6 adults with additional rooftop tent.

* Data accurate at time of print, please visit website product listing for more unit specifications & most current information.

** Weights are indicative and subject to change. The build specification will change the weight. Actual weights will be displayed on compliance plates at time of build. Pods only have diesel heater but other models have both Dometic aircon/diesel heaters



SIZE CLOSED - INCLUDES A/C
Length 6.2m - Width 2.25m - Height 2.45m



ATM

APPROX.
2250KG



CHARGER SYSTEM

REDARC ROGUE
POWER SYSTEM



BATTERY

1 x 150AH
LITHIUM



POWER

240V CONNECTION
INCLUDED



WATER TANKS

2 x 65L CLEAN



HEATING

DIESEL HEATER
INCLUDED



CAPACITY

UP TO
6 ADULTS



GAS & JERRY HOLDERS

2 x 9KG GAS
2 x 20L JERRY