

# XSERIES RV

# X-TERRA

## NEW X-SERIES HAS ARRIVED

### 19FT HARD ROOF TOY HAULER

FOR FAMILIES WHO LOVE GETTING OFF-ROAD  
& HITTIN' THE MOUNTAIN TRAILS!

Take your camping trips to the next level with this family size toy hauler hybrid fitted with all the luxuries you need.

It features a rear drop down access ramp which can double as a sun deck area, fold away single beds, interior ensuite room with toilet & shower as well as much more.

The 9 floor mounted tie down points mean you have the space you need for your bikes to come along on your adventures.



[XSERIESRV.COM.AU](http://XSERIESRV.COM.AU)

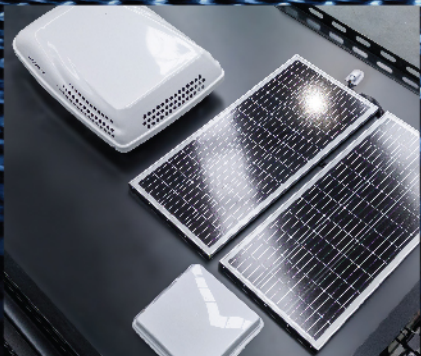
FOLLOW US



Q | X SERIES RV AUSTRALIA



CAPACITY:  
4 ADULTS



## CHASSIS

Tare 2400kg* Ball Weight 280kg*	●
Drawbar Tube Size 150mm x 50mm x 4mm	●
Hot Dip Galvanised	●
16" Mud Terrain Tyres With 1 Spare Included	●
Alloy Rims	●
Heavy Duty Removable Jockey Wheel	●
Do35 Hitch with Receiver Coupling	●
12" Electric Brakes & Manual Handbrake	●

## SUSPENSION

Off Road Independent Suspension System	●
Heavy Duty Coil Springs & Shock Absorbers	●

## STORAGE

1 x Large Front Toolbox	●
Dual Dedicated Fridge Slides with Power Supply	●
19+ Interior Storage Cupboards & Drawers	●
4 x External Storage Hatches & Drawers	●
2 x 9kg Gas Bottle Holders	●
2 x 20L Jerry Can Holders	●

## KITCHEN & BATHROOM

Interior & Exterior Thetford 3 Burner Cooktops with Lighting & Gas Plumbing Connections.	●
2 x 95L Fresh Water Tanks	●
125L Grey Water Tank	●
700w Microwave	●
152L Fridge	●
Thetford Cassette Toilet	●
Installed On Board Hot Water Unit	●
External Shower Outlet	●
Interior Ensuite Shower with Movable Rose Head, Roof Ventilation, LED Lighting & Full Size Mirror on Entry Door	●

## SAFETY

Fire Extinguisher Included	●
ADR Approved Safety Chains & Coupling	●
Dual Internal Smoke and Carbon Monoxide Alarms	●
Reversing Camera Included	●

## EXTERIOR GENERAL

Fibreglass Body with Aluminum Internal Frame	●
Black Raptorcoat Lower Body Wrap	●
Entry Door with Separate Screen Door	●
5m x 2.3m Electric Sunshade Awning with LED Lighting	●
Electric Operating Rear Loading Ramp/ Sundeck with Safety Railing, Roof with Lighting & 9 x Tie Down Points	●

## INTERIOR GENERAL

Multimedia Touch Screen Stereo System & 24" Smart TV	●
Dometic Dual System Heating & Cooling Air Conditioner & Diesel Heater	●
Internal & External LED Lighting Throughout	●
Queen Size Main Bed	●
2 x Fold Away Single Beds	●
Dual Interior & Exterior Speakers	●
Windows with Block Out & Fly Screen Panels	●
Wood Printed Vinyl Flooring	●
Black Cabinetry Finishings with Soft Closing Drawers	●
Built In Sky Light Hatch with LED Lighting	●

## POWER

REDARC Battery Management System with Solar Reg, Charging, & Bluetooth Controls	●
Anderson Plug Car Connections	●
2 x 150ah Lithium Batteries	●
Dual 200w Roof Mounted Solar Panels	●
3000 WATT - 12v / 240v Inverter System	●
240V Connection with Multiple GPO Points	●
Multiple 12V Sockets with Dedicated Fridge Sockets	●

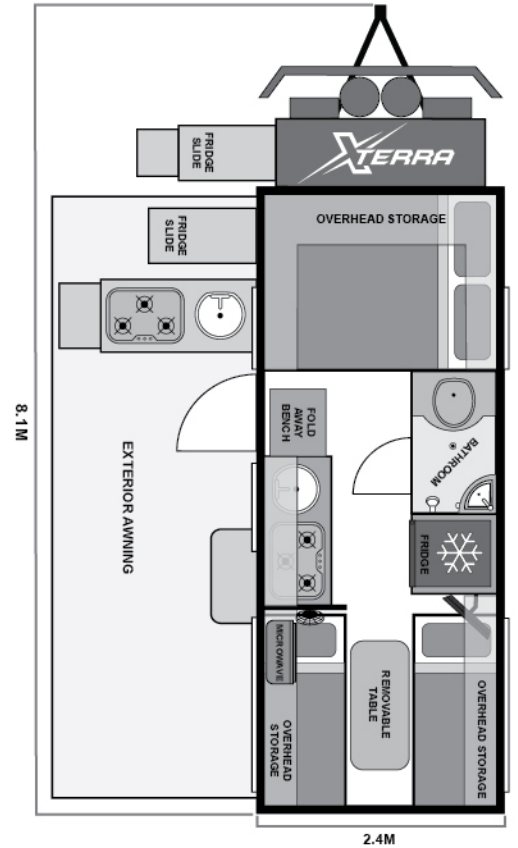
## CAMPING ACCESSORIES

62L Dual Zone Fridge Freezer	○
2KVA Generator	○

● Standard ○ Optional Upgrades

\* Data accurate at time of print, please visit website product listing for more unit specifications & most current information.

\*\* Weights are indicative and subject to change. The build specification will change the weight. Actual weights will be displayed on compliance plates at time of build. Pods only have diesel heater but other models have both Dometic aircon/diesel heaters



SIZE CLOSED - INCLUDES A/C  
Length 8.1m - Width 2.4m - Height 3.1m



ATM  
APPROX.  
3500KG



TARE  
APPROX.  
2400KG



BALL WEIGHT  
APPROX.  
280KG



CHARGER SYSTEM  
REDARC POWER  
SYSTEM & INVERTER



BATTERY  
2 x 150AH  
LITHIUM



POWER  
240V CONNECTION  
INCLUDED



WATER TANKS  
2 x 95L CLEAN  
1 x 125L GREY



HEATING & COOLING  
DOMETIC DUAL SYSTEM  
INC. & DIESEL HEATER



CAPACITY  
4 ADULTS



GAS & JERRY HOLDERS  
2 x 9KG GAS  
2 x 20L JERRY