

XSERIES RV

XVOYAGER

NEW X-SERIES HAS ARRIVED

15FT POP TOP HYBRID CARAVAN WITH ELECTRIC ACTUATOR RAISING ROOF

THE COMPACT HYBRID CARAVAN OPTION FOR OUTDOOR & ADVENTURE LOVING FAMILIES!




The Pop Top you have been waiting for, with all the bells & whistles, including actuator raising roof & simple fold out main bed for an easy no fuss setup.

It comes with everything you need to cook up a full family meal wherever you are with a built in internal fridge & dual Thetford branded 3 burner cookers, inside & out. Then take a break & enjoy your meal under the shade of your large electric awning.

The on board REDARC Power management system lets you control your camper with a Bluetooth App system & you can make the most of your power with the built in Inverter. Then keep everything charged up with the dual roof mounted solar panels.

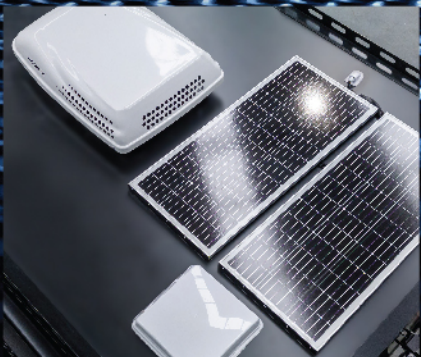


XSERIESRV.COM.AU

FOLLOW US    X SERIES RV AUSTRALIA



CAPACITY:
2 ADULTS
2 CHILDREN



CHASSIS

Tare 2150kg* Ball Weight 200kg*	●
Drawbar Tube Size 150mm x 50mm x 4mm Hot Dip Galvanised	●
16" Mud Terrain Tyres with 1 Spare Included	●
Alloy Rims	●
Heavy Duty Removable Jockey Wheel	●
Do35 Hitch with Receiver Coupling	●
12" Electric Brakes & Manual Handbrake	●
Electric Actuator Lifting Pop Top Roof	●

SUSPENSION

Off Road Independent Suspension System	●
Heavy Duty Coil Springs & Shock Absorbers	●

STORAGE

1 x Large Front Toolbox	●
Dedicated Fridge Slides with Power Supply	●
8+ Interior Storage Cupboards & Drawers	●
2 x 9kg Gas Bottle Holders	●
2 x 20L Jerry Can Holders	●

KITCHEN & BATHROOM

Interior & Exterior Thetford 3 Burner Cooktops with Lighting & Gas Plumbing Connections.	●
2 x 95L Fresh Water Tanks	●
125L Grey Water Tank	●
Interior Built in Fridge / Freezer	●
Installed On Board Gas/Elec Hot Water Unit	●
External Shower Outlet	●
Thetford Cassette Toilet	●
Full Size Mirror on Ensuite Entry Door	●
Interior Ensuite Shower Room with Movable Rose Head, Corner Sink, Roof Ventilation, LED Lighting & Mirror	●

SAFETY

Fire Extinguisher Included	●
ADR Approved Safety Chains & Coupling	●
Dual Internal Smoke and Carbon Monoxide Alarms	●
Reversing Camera Included	●

EXTERIOR GENERAL

Fibreglass Body with Aluminum Internal Supports	●
Black Heavy Duty Lower Body Coating	●
Entry Door with Separate Screen Door	●
4m x 2.3m Electric Sunshade Awning with LED Lighting	●
Fold Down Serving / Picnic Bench with Lighting	●

INTERIOR GENERAL

Multimedia Touch screen Stereo System & 24" Smart TV	●
Dometic Dual System Heating & Cooling Air Conditioner & Diesel Heater	●
Internal & External LED Lighting Throughout	●
Queen Size Main Bed	●
Dual Single Bunks at Front with Built In Ladder	●
Leatherette Lounge Seating Area with Swing Away Table	●
Windows with Block Out & Fly Screen Panels	●
Wood Printed Vinyl Flooring	●
Grey Cabinetry Finishings with Black Handles	●
Built In Sky Light Hatch with LED Lighting	●
Interior & Exterior Speakers	●

POWER

REDARC Battery Management System with Solar Reg, Charging, & Bluetooth Controls	●
Anderson Plug Car Connections	●
2 x 150ah Lithium Batteries	●
Dual 200w Roof Mounted Solar Panels	●
3000 WATT - 12v / 240v Inverter System	●
240V Connection with Multiple GPO Points	●
Multiple 12V Sockets with Dedicated Fridge Sockets	●

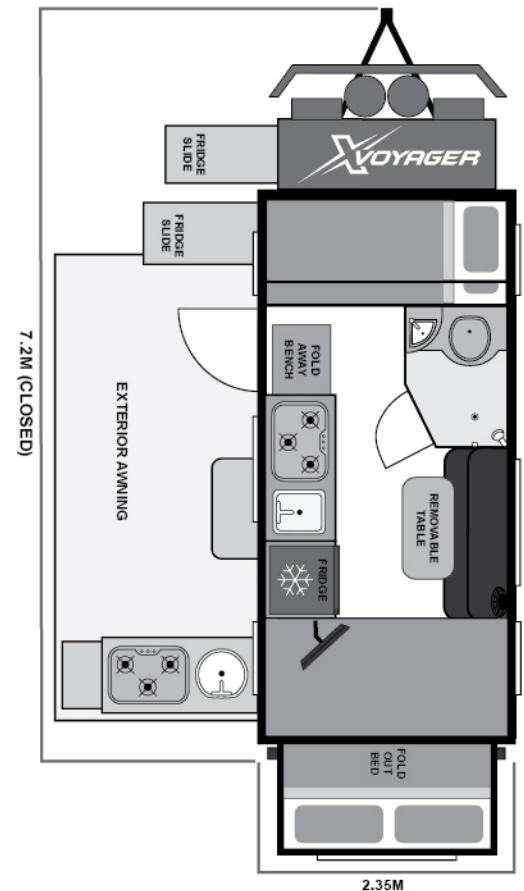
CAMPING ACCESSORIES

62L Dual Zone Fridge Freezer	○
2KVA Generator	○

● Standard ○ Optional Upgrades

* Data accurate at time of print, please visit website product listing for more unit specifications & most current information.

** Weights are indicative and subject to change. The build specification will change the weight. Actual weights will be displayed on compliance plates at time of build. Pods only have diesel heater but other models have both Dometic aircon/diesel heaters



SIZE CLOSED - INCLUDES A/C
Length 7.2m - Width 2.35m - Height 2.75m



ATM
APPROX.
2850KG



TARE
APPROX.
2150KG



BALL WEIGHT
APPROX.
200KG



CHARGER SYSTEM
REDARC POWER
SYSTEM & INVERTER



BATTERY
2 x 150AH
LITHIUM



POWER
240V CONNECTION
INCLUDED



WATER TANKS
2 x 95L CLEAN
1 x 125L GREY



HEATING & COOLING
DOMETIC DUAL SYSTEM
INC. & DIESEL HEATER



CAPACITY
2 ADULTS
2 CHILDREN



GAS & JERRY HOLDERS
2 x 9KG GAS
2 x 20L JERRY